

# THE MCCLURE COMMUNITY

## McClure Place

McClure Place is a not-for-profit seniors' community that promotes an active, independent lifestyle. The 14-storey apartment tower has 108 bright, spacious suites, including both life lease and subsidized rental suites. Every suite has a full kitchen and private balcony.



## Amy McClure House

Amy McClure House is a licensed personal care home that provides care for seniors with reduced physical or cognitive abilities. There are 21 spacious suites and experienced staff to provide 24-hour care. At Amy's House, respect for each resident's individuality is paramount.



## McClure United Church

McClure Place and Amy McClure House are both outreach projects of McClure United Church.



## To Donate:

McClure Place Foundation  
1825 McKercher Drive  
Saskatoon, SK S7H 5N5  
306-955-7677 Ext. 227  
Email: [foundation@mcclureplace.ca](mailto:foundation@mcclureplace.ca)

For more information visit our website:  
[www.mcclureplace.ca](http://www.mcclureplace.ca)

Credit card, cheque or cash donations gratefully accepted.



SUPPORTING COMMUNITY.  
SUSTAINING EXCELLENCE.





THE MCCLURE

# LEGACY



## SUPPORTING COMMUNITY

McClure Place Foundation is a non-profit, charitable organization dedicated to enriching seniors' lives. We do this by encouraging, coordinating, supporting and providing services, facilities, advocacy and education.

McClure Place Foundation is the fundraising arm of the McClure Place Association. We raise funds and build community awareness through a variety of special events, including the annual Golden Heart Dinner & Awards.

### Golden Heart Dinner & Awards

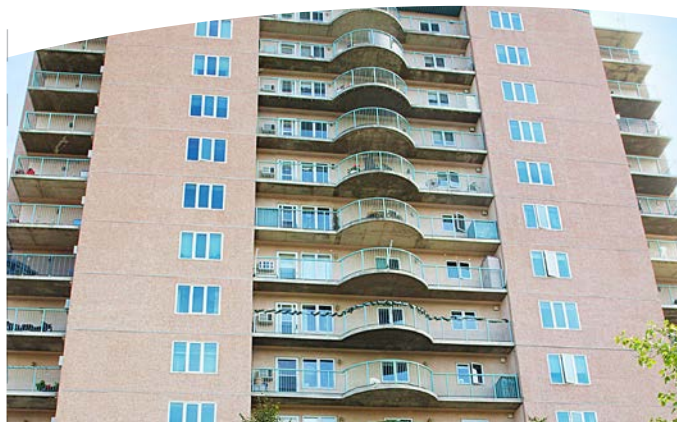
Since 2003, McClure Place Foundation has recognized excellence in work with seniors across the province through the Golden Heart Awards. Members of the public nominate people they feel have shown exemplary involvement in seniors' lives. Candidates are nominated in three categories - youth, individual and organization. Awards are presented at the annual fundraising gala dinner.

### The Big Shred

The Big Shred is an innovative fundraising event on a year to year basis that also benefits the environment. The public is invited to bring personal and business documents to the parking lot of McClure United Church, where the Foundation hosts a large scale shredding operation.



*McClure Place is a vibrant independent living community for seniors ages 55+*



## SUSTAINING EXCELLENCE

McClure Place Foundation has been a leader in supporting seniors' programming and facilities since 1988. We are a non-profit, charitable organization that serves another non-profit organization - McClure Place Association Inc., which is responsible for day-to-day operation of McClure Place and Amy McClure House. The opening of Amy McClure House in 2005 has been the highlight in the history of the foundation, and timely repayment of its mortgage demonstrates responsible stewardship of donated funds.

### Affordable & Enriched Living

The McClure housing model welcomes diversity and promotes inclusion, regardless of a person's income, religious belief or culture. With the cost of living increasing, we strive to keep our life lease and rental rates affordable. One third of all McClure Place suites are designated affordable housing units to ensure seniors with limited financial means have access to enriched living and a vibrant, active lifestyle in the McClure community.

*Community is at the heart of McClure*

## YOU CAN HELP

### Here are just a few of the ways:

- ✿ Consider a monthly or yearly planned donation
- ✿ Consider a gift-in-kind (e.g. stocks, bonds, property)
- ✿ Make a donation to fundraising appeals
- ✿ Make an in memoriam/in memory donation in honour of loved ones and friends
- ✿ Name McClure Place Foundation as a beneficiary in your will
- ✿ Participate or volunteer at special events
- ✿ Sponsor a special event or capital drive

